

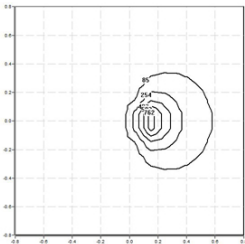


122KXS.4-I1123



Bollard with frontal light emission, symmetrical distribution.
Bollard height 395mm.
Protection rating against dust and moisture: complete IP66.
Protection rating for resistance to harmful mechanical impacts: IK10.
Extruded aluminium profile coated with polyester powder along with C4 treatment for corrosion resistance to guarantee further durability. Textured paint finish. Different RAL colour finishes available under request. C5-M special coating for highly corrosive environments is available under request.
A4 stainless steel locking screw. Optional A2 stainless steel vandal-proof screw.
Highly efficient linear printed circuit board.
Protection polycarbonate diffuser in 4mm.
Interior opal diffuser.
Silicone gasket.
Built-in driver, included. Ambient temperature: up to 50°C.
Anti-condensation device.
IP68 connector not included, it can be ordered separately: F3.A3.
Pre-wiring of 35cm cable 3x1mm².
Mounting plate for floor installation supplied with the fixture.
Accessory for concrete installation reference F3.P1.KRM.
Accessory for grass installation reference F3.P1.KRM.

Luminaire luminous flux: 281lm
Luminaire connected power: 4.81 W
Luminaire efficiency: 58 lm/W
Light source luminous flux: 625lm
Light source power: 3.2 W
Constant Current: 150 mA
CRI: >80
Colour Temperature: 3000K
Chromaticity Tolerance: MacAdam 3
Beam Angle: 100°
LOR: 45%
Average Service Life: 50000h
LED reliability: >72000h L80B10
Photobiological safety group: 1
This product contains a light source of energy efficiency class C



Electronic Equipment

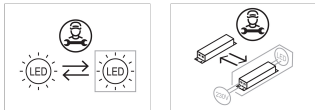
S: On/Off
D: DALI-2/switchDIM
B: Bluetooth-Casambi

*Add the suffix **-S**, **-D**, **-B** after the reference to indicate your electronic equipment choice.

Finishes

1: RAL9010: Pure White textured, **2:** RAL9005: Jet Black textured, **4:** RAL7016: Anthracite Grey textured, **7:** RAL9006: White Aluminium textured

Upgradeable, Replaceable, Repairable



Note

LED technology and performance data are constantly changing. Current details should therefore be checked with ROVASI in order to ensure that it is still the most up to date reference. Updated data will be supplied on request. [Last revised on 06.05.2024]

5 years guarantee



BSI Cert ISO 9001:2015 - n°FM 39346
BSI Cert ISO 14001:2015 - n°EMS 554685

ROVASI S.L.
Ronda de la Font Grossa, 15
Pol. Ind. La Gavarra
08540 Centelles | Barcelona
Spain

Contact
T. +34 93 881 35 12 info@rovasi.com
T. +34 93 881 37 13 **www.rovasi.com**